



## Department of Public Works Waste Management Division

### Code Enforcement

**Andreose Jefferson, Superintendent**

1176 Pineridge Road – Norfolk, VA 23502

(757) 441-1176

1

## Mission



To provide the citizens of the City of Norfolk with a quality, integrated waste management collection system and maintain a clean city.



2

## Services Provided



Collects about 86,000 tons of refuse, bulk waste, and yard waste annually from 61,000 residences and businesses



Provides refuse collection for special events



Ensures that all containerized garbage and trash properly set out is picked up when scheduled



On site drop-off collection for cardboard



3

## Collection

Once a week curbside collection

Collection begins at 7 a.m. each day

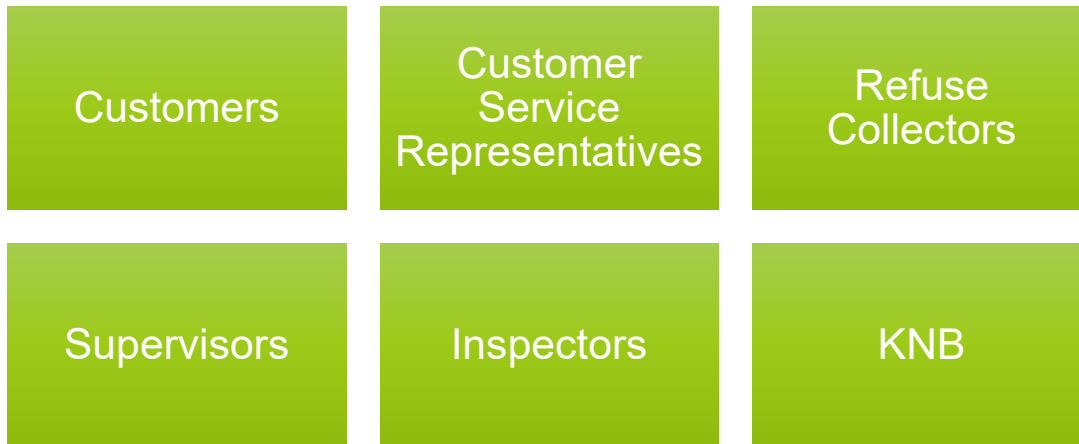
Bulk waste must be scheduled by 3:00 p.m. the business day before regular collection

Containers can be placed out as early as 5 p.m. on the day before collection and no later than 7 a.m. the day of collection



4

## Stakeholders



5

## Team Members

REFUSE INSPECTORS	REFUSE SUPERVISORS
Tariq DeBerry (Lead)	Enforcement – Clarence Bullock
Tavion Wood	Alan Speller
Eric Dodd	Adrian Gill
Craig Banks	Sidney Trotter
Jerold Eddins	James Williams
REFUSE SUPPORT	
Assistant Superintendent Clarence Bullock (757) 441-1176, ext. 4214	NORFOLK CARES CENTER (757) 664-6510



6

## Duties and Responsibilities of Inspectors

Patrols assigned areas

Educates the public

Advises residents and private solid waste collection firms of the provisions of city codes

Investigates accidents and reported property damage.

Investigates accidents

Interviews customers who submit a request to utilize the exempt program



7

## Enforcement Triggers

### Routine Inspections

If a violation is identified under 3 cubic yards education is provided by mail or Door Hanger and logged into NorthStar.

Container/trash/bulk placed out early

Bulk/waste/special collection not scheduled

Overflow garbage/trash outside container not scheduled.

Household waste not bagged in container

Yard waste not properly cut, tied, and bundled 4 ft lengths

Yard waste more than 20 bags or bundles or weighing more than 45 pounds each

Trees and limbs greater than 6 inches in diameter, 4 ft in length and not scheduled for collection

Address/unit number not identified on container

### Service Call Created by Norfolk Cares

**Inspector Investigates** within 1 to 5 business days



### Notice of Violations (N.O.V.)

- Issued for nuisances or unscheduled refuse exceeding 3 cubic yards.
- If items are not removed by the posted date and time the strike team will remove for the posted fee.

### FINES

### Fines & Special Collection Fee Added

Repeat Violations within 12 Months

1<sup>st</sup> Violation \$25.00 2<sup>nd</sup> Violation \$50.00 3<sup>rd</sup> Violation \$100.00

Violations are submitted to Strike Team for Removal

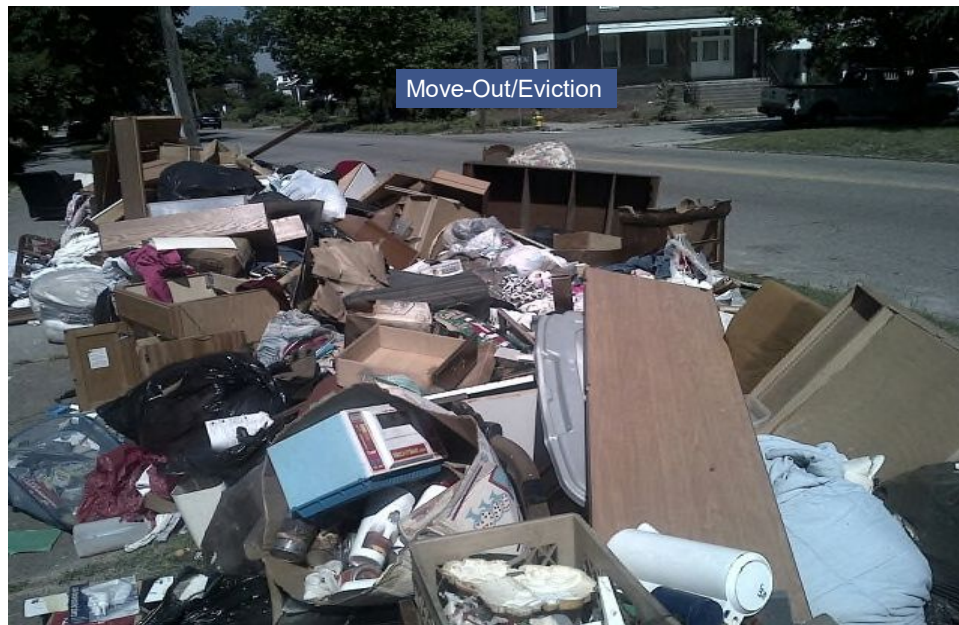


### Special Collection Unscheduled Rate

Up to 9 cubic yards \$150  
10 – 15 cubic yards \$225  
16 – 22 cubic yards \$275  
Excess of 2 cubic yards \$15 per CY



8



9



10



11



12



13



14

Together we can!!!



Together we will!!!!



15

15

Thank You!



Questions?



16

16